



the  
**GROWTH  
REPORT**

2017  
*GROWING LEADERS  
AND COMMUNITIES*



GREENHOUSE  
SCHOLARS



# GREENHOUSE SCHOLARS

**Greenhouse Scholars is an education  
non-profit that cultivates extraordinary  
leaders to change low-income families  
and communities.**

Greenhouse Scholars' Growth Report 2017. Published annually. Greenhouse Scholars, 1881 9th Street, Suite 200, Boulder, CO 80302-5148, Issue 16

## Hi Everyone,

What an exciting year for Greenhouse Scholars! We've added some great people to our staff. We received the largest gift in the history of our organization, and more six-figure gifts than ever before. We have been successfully implementing our new and evolved program components. We are now serving and supporting well over 200 Scholars. And last but not least, we have expanded our footprint to North Carolina.

North Carolina is now the fourth state we select Scholars from, and like all of our expansion efforts it is both strategic and donor-community driven. This expansion of our impact is further evidence that our values, our mission, our program, and our focus on excellence in execution and relationships all continue to distinguish Greenhouse Scholars as unique, compelling, and highly effective. While right now we are focused on supporting our Scholars in the four states they come from and in the communities across the country we are working with them to positively impact, we certainly anticipate expanding our program in the future.

In fact, with three offices (in Colorado, Illinois, and North Carolina); Scholars attending universities in 24 states; mentors, professional networking contacts, and other critical volunteers in 19 states; donors in 41 states; and community impact projects in 11 states and 12 countries; we are truly a national organization having an international impact. As I mentioned in opening this letter, exciting times indeed.

What is most exciting for me right now is our growing impact - with our Scholars, with all of you in our donor and volunteer community, and, importantly, in a growing number of low-income families and communities. The difference we are making is growing, the difference we are making is tangible, and the difference we are making is lasting. Please spend some time browsing through the content in this newsletter to learn more about our results, our stories, and our impact.

What we are accomplishing would not be happening without the generosity of our donors and volunteers. In addition, all of your efforts in spreading the word for us, recruiting new people into our community of supporters, and making sure more people understand the unique value and results we are creating are crucial for us as we continue to grow and spread our work across the country.


Thank you for your support, and please reach out anytime with questions or suggestions.

**Peter M. Burridge**

President and CEO







As a greater-purpose driven organization,  
our vision and values guide all that we do.

## OUR GREATER PURPOSE

informs our decision-making, our business strategy,  
our hiring, and our culture.

## OUR VISION

To create a community of leaders who will  
evolve the communities of the world.

## OUR VALUES

### Leadership

All leaders have a vision and the ability to manifest that vision into reality. When we say leader, we mean one who inspires. We mean someone who is distinguished by exceptional courage, integrity, and strength, someone who is able to realize his or her vision by taking action and leading others to accomplish this vision. Leaders are not born. They are created - nurtured to their greatest potential with encouragement, direction, and inspiration.

### Community

Community is, simply put, one of the most powerful ways to change the world. Creation of a community generates shared purpose, which in turn inspires passion and momentum. Through community, Greenhouse Scholars will create and capitalize on an opportunity to achieve something big - or small - and have a better chance of realizing valuable results. Our ability to create a lasting sense of community will be the change we make in this world.

### Relentlessness

Relentlessness is never losing touch of our dreams and continuing to strive no matter the obstacles. The will to persevere through the hardest of times for a cherished passion demonstrates a strong sense of personal character. People who are relentless are not frightened by challenges, are willing to go the extra mile, and understand that sometimes you must fail more than once in order to win. Relentlessness is also the ability to recover and adjust to misfortune and change. As leaders, it's important to understand that things do not always go as planned, and the ability to adapt to changes efficiently separates good leaders from the great.

### Accountability

At Greenhouse Scholars, we define accountability as proactively following through on promises and commitments. Accountability is the foundation for trust. We will step up to challenges, deliver on promises, take ownership of our work, and aren't afraid to acknowledge our mistakes. Accountability ensures progress. We will be aware of our impact on Scholars, employees, our communities, and the world. We won't sit idly by - we will take action to make things better.





# HELLO NORTH CAROLINA!

## **We are absolutely thrilled about Greenhouse Scholars' expansion to North Carolina.**

Starting now we are accepting students from North Carolina high schools to become part of our community as we guide them to maximize their impact throughout college and beyond.

## **North Carolina has a demonstrated need for our services.**

One in four children in North Carolina live below the poverty line and, according to a 2015 Harvard study, Mecklenburg County (home to the state's largest public school district, Charlotte-Mecklenburg) ranks in the bottom 3% nationally for income mobility. Low-income students have a 50% better chance of making it out of poverty with a college education. With a graduation rate of more than 8 times the national average for low-income students, we are positioning our Scholars to break the cycle of poverty.

## **A driving force behind this expansion is the incredibly generous support of a well-known member of the state's philanthropic community.**

As a leader in education, this longtime supporter recognized Greenhouse Scholars as a solution to the problems that she saw in her state and donated \$500,000 over five years for us to launch in North Carolina. This is Greenhouse Scholars' largest donation to date. Our appreciation for this level of support cannot be overstated.

Since opening our office in North Carolina, dozens of other community members have stepped up to work to change low-income families and communities with us. We look forward to growing our community in the state and working with all of those who will join us as catalysts for lasting change.

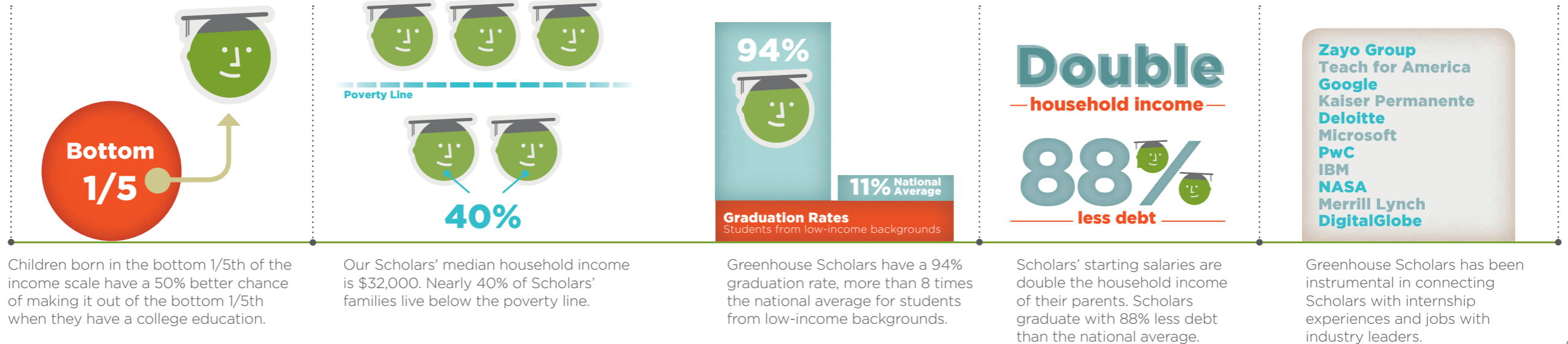
To learn more or get involved, please contact Allison Wallace:  
**[awallace@greenhousescholars.org](mailto:awallace@greenhousescholars.org)**

# OUR RESULTS

Since 2005 we have empowered extraordinary young role models with the professional, personal, and financial resources to help them be perpetual change agents for generations to come.

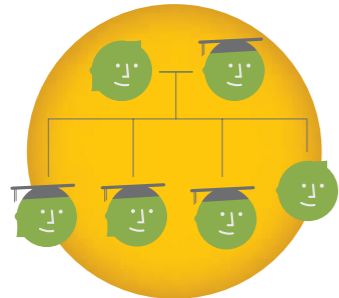
Lasting impact begins with education and the more than 220 Scholars and Greenhouse Scholars community members across 41 states who are affecting thousands around the world.

## The Opportunity To Level The Playing Field



# OUR RESULTS

## The Opportunity To Ensure Lasting Generational Change



### Firsts

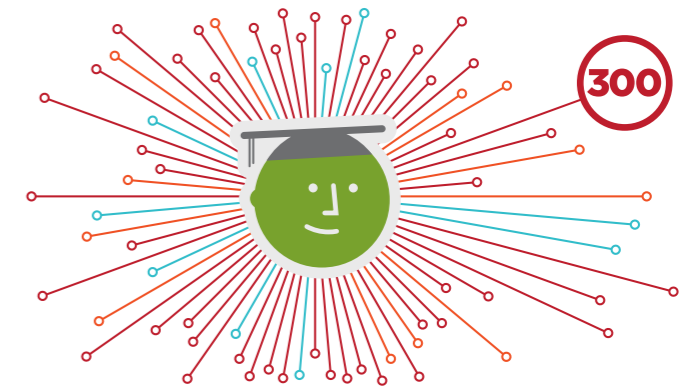
Parents with no secondary education will typically have just one of four children attend college. Parents with one college degree will typically have three of four children attend college.

74% of Greenhouse Scholars are the first in their family to attend college; 19% are the first in their family to graduate high school while 7% are the first in their family to complete middle school

## The Opportunity To Broadly Impact Low-Income Communities



Each of our Scholars positively impacts an average of 316 low-income students. Scholars have tutored and mentored over 56,000 middle and high school students.



We have funded and supported our Scholars in building more than 300 impact projects, such as:

- » College boot camps for low-income middle school students
- » A conference educating thousands of young people about the realities of human trafficking
- » Academic research about food deserts on the South Side of Chicago
- » Healthcare and refugee assistance for marginalized populations in Ethiopia and India
- » A peer-reviewed academic article on HIV treatments
- » A clean water project in Ghana
- » An athletic program for hundreds of inner-city youth





# FOUNDATION FOR GLOBAL SCHOLARS

We want to share our overwhelming appreciation for Cynthia Banks, Shelia Houston, and the Foundation for Global Scholars. The foundation came out of a highly successful study abroad company, GlobaLinks, which provided more than 30,000 students with study abroad experiences. In 2016, the board of the Foundation for Global Scholars thoroughly vetted a small group of non-profit organizations and selected Greenhouse Scholars to receive a donation of \$300,000 over three years. It is with great pride that we protect their legacy in education through our work with students in international education and entrepreneurship.



**We are truly honored by this gift and excited about the lasting change that it will help us to create by supporting:**

## **Summer Symposium**

— where Scholars received international insights from Anderson Cooper and Jennifer Wilson, Executive Director of the International Rescue Committee's Denver office.

## **Flex Funding for international education projects**

— used by Scholar Misha White to afford a three-month internship in Baja, Mexico.

## **Tuition scholarships for international studies**

— which allowed Kennia Garcia to explore her passion for international business during a semester abroad in Padua, Italy.

## **Impact program component**

— through which the class of 2021 is launching an entrepreneurial mentorship and leadership development program at a high school in Montbello, Denver.

Partnerships like these are key to Greenhouse Scholars' success and our organization's cultivation of extraordinary leaders who will change low-income families and communities.

## GREENHOUSE SCHOLARS

# OUR PROGRAM



Last year – with the goal of increasing our impact and building on our success from the first 10 years of our program – we unveiled two new program components, Impact and Skills Modules. The Impact program has already guided Scholars to maximize the positive influence that they have on their communities, and we’re excited that Skills Modules will provide them with knowledge they won’t receive anywhere else.

### Impact

We provide a strategic framework to enable each Scholar to elevate their impact and take action, both individually and as a group, to positively impact and inspire younger generations of students from low-income communities.

### Financial Support

Scholars apply for a four-year, renewable scholarship of up to \$5,000 per year, based on their financial circumstances and college expenses.

Scholars may also apply for Flex Funding, a grant of up to \$2,000 per semester, to support a wide range of projects and experiences that align with the vision and values of Greenhouse Scholars.

### Summer Symposium

We host an annual, world-class, multi-day gathering to bring together all of our Scholars. Workshops, speakers, panel discussions, and group projects allow Scholars to explore our core values, expand their thinking, and cultivate their leadership skills.

### Skills Modules

We share the broad range of our community’s expertise with our Scholars through targeted, modular online content that develops leadership, life, and professional skills.

### Internship

We coach our Scholars through the process of finding and making the most of internships and help to match them with opportunities at top organizations.

### Peer Support

Scholars celebrate and support one another, gathering in small groups across the country on a specific day each year.

### Professional Networking

Successful leaders engage with Scholars to broaden their networks and connections. This diverse network motivates Scholars to think strategically about their direction and impact and provides essential insights and connections into the professional world.

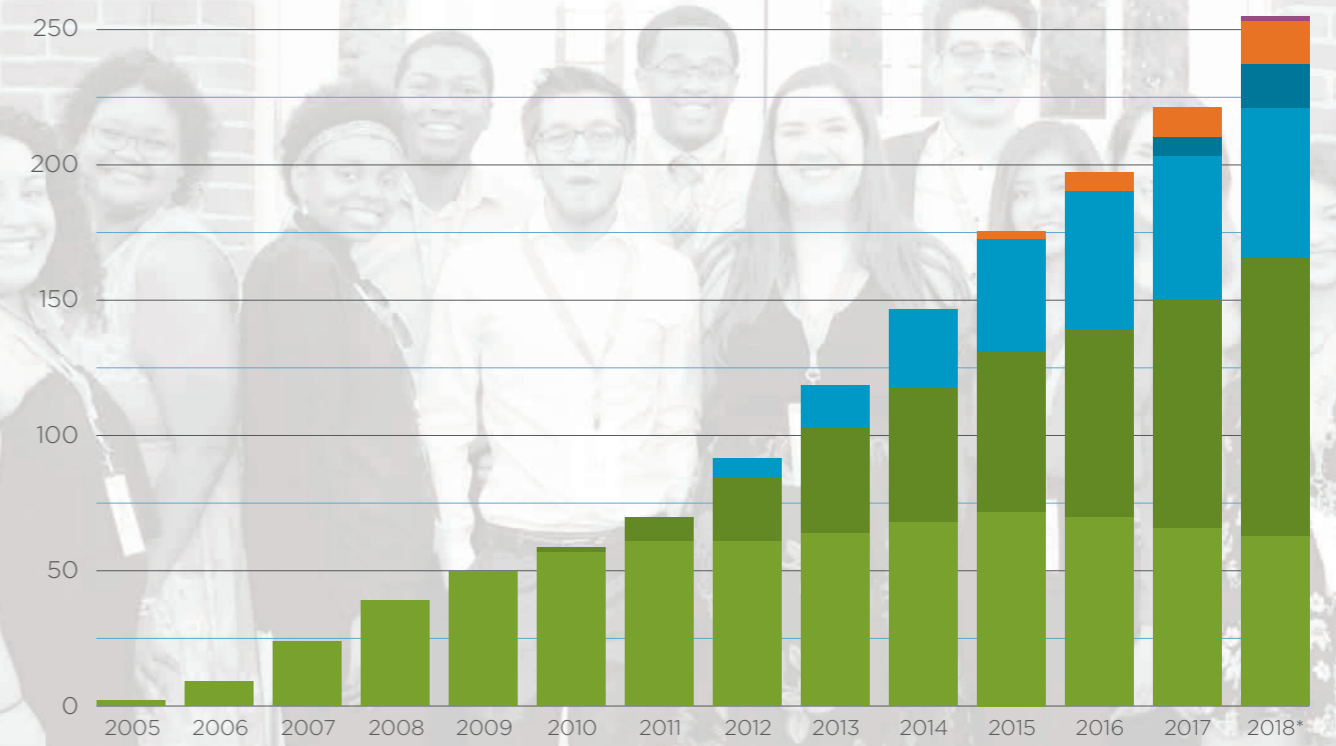
### Mentorship

Scholars are paired with mentors who are community leaders that guide, encourage, and inspire them to achieve more than they could on their own. Scholars are matched with their mentor prior to college and maintain the relationship throughout college and beyond.



**SINCE 2005, THE NUMBER OF GREENHOUSE SCHOLARS HAS GROWN BY AN ANNUAL AVERAGE OF 28%.**

**Total Number of Scholars by Year**



- Colorado Scholars
- Colorado Alumni
- Illinois Scholars
- Illinois Alumni
- Georgia Scholars
- North Carolina Scholars

\*2018 projected



# 220+

Greenhouse Scholars is currently serving a community of more than 220 Scholars and alumni. These extraordinary students and young professionals are those who best demonstrate the Greenhouse Scholars core values of leadership, community, relentlessness, and accountability.

## OUR VALUES IN ACTION

### Leadership

**Amina Boyaud | Class of 2019**

Assisted high school students with scholarship applications and senior research projects



### Community

**Stephanie Shock | Class of 2020**

Managed donated accommodations to safely shelter the homeless



### Relentlessness

**Bashel Lewis | Class of 2019**

Started initiatives to promote equality and provide affordable housing while homeless in high school



### Accountability

**Vinh Pham | Class of 2018**

Worked nearly full time while getting an engineering degree to help his family afford housing





## Sana Moqheet

*Class of 2018, Loyola University*

### Takes care of people in need

Sana wanted to gain insight into the healthcare challenges of an unfamiliar community. This spring, she participated in a medical service trip to Quito, Ecuador. Sana said, "I believe this experience has shown me I am accountable to those I wish to serve, and that service has no cultural, ethnic, or racial boundaries."



## Nadeen Ibrahim

*Class of 2017, University of Colorado Denver*

### Creates sustainable communities

In Guatemala, Nadeen promoted sustainability by assisting with reforestation and the construction of stone stoves in rural communities to reduce chances of respiratory illnesses. She also learned both the Spanish and Mayan languages to engage with native tribes and help elementary-aged children in rural schools to learn English and the value of reading.



## Zeke Perez

*Class of 2013, University of Denver*

### Generates policy to improve education

Zeke's passion for impact is undeniable. He hopes to run for Mayor of Denver one day and is currently working as a Policy Analyst with the Education Commission of the States (a Denver-based, education reform non-profit) to promote positive changes in education. Zeke shows his gratitude and continued appreciation for Greenhouse Scholars by remaining involved with the program as a mentor to Scholar, Juno Padilla.



## Jessica Trinh

*Class of 2020, Yale University*

### Develops plans for long-term wellness

As an Advanced Nutrition Dietary Outcome Counselor, Jessica learned about the importance of understanding people's health habits outside of the hospital. She measurably impacted the lives of others by assisting more than a dozen resident physicians on a daily basis and working with several patients to develop long-term nutritional plans.



## Mimi Chau

*Class of 2011, Stanford University*

### Provides healthcare to isolated populations

Mimi used her Greenhouse Scholars support network long after graduating from Stanford and, in May, she became the first Scholar to earn her MD after specializing in pediatrics at the University of Colorado Medical School. She is passionate about medicine and is currently in Seattle Children's Hospital Alaska Track, a program that has residents spend four months out of each year serving patients in under-resourced parts of Alaska.



# OUR IMPACT

While we are deeply committed to helping all of our more than 220 Scholars, Greenhouse Scholars is also creating huge leverage by inspiring, supporting, and driving them to change the trajectory of their families and communities for future generations.

# SCHOLAR SPOTLIGHT



GLODIE

## Glodie Mujinga-Mulunda

*Class of 2019, Yale University*

Glodie spent the first 10 years of her life in the Democratic Republic of the Congo. Even as a child, she was acutely aware of how limited her educational opportunities were. Her parents, recognizing the country's state of instability, made the difficult decision to bring their family to the United States in search of better opportunities.

From a young age Glodie was passionate about engineering and technology because she recognized their ability to bring solutions to the Congo that would promote drastic changes in education and business and contribute to the country's economic development. During her time at Yale, Glodie realized that the best way to pursue her passion for development would be to study economics and help work toward foreign policies that would help the DRC and other developing nations.

Glodie never lost her passion for engineering though, and as a sophomore, she, a classmate, and a fellow at the university founded the Assistive Labs at Yale (ALY). The organization works to serve vulnerable communities in developing countries by providing technological interventions and solutions. By working directly in these communities to build, design, and implement assistive technologies for health, education, and mobility, they are able to create solutions that are customized to the needs of the population. Glodie credits Greenhouse Scholars for helping her get to this point, saying that "I would not have founded ALY if I did not attend Chicago Ideas week, which was made possible by Greenhouse Scholars Flex Funding and my sponsor, Steve Monieson."



JOSE

## Jose Banales

*Class of 2019, University of Denver*

Jose graduated as valedictorian of his class at West High School and was a leader of the football, basketball, and baseball teams. Jose is the first generation in his family to go to college and set a goal to be a role model for other young, Mexican-American men, which stemmed from a difficult relationship with his father.

While at University of Denver, Jose worked diligently to build meaningful relationships among Latino men and youth. He joined Sigma Lambda Beta, a historically Latino fraternity, with the mission to nurture and promote a dynamic, values-based environment to enable brothers to act as catalysts who serve the needs of others. Jose became an instrumental leader in hosting the 9th annual Retention of Youth and Latinos conference (ROYAL). The event's theme revolved around social justice and brought 120 male high school students from Denver Public Schools to DU, where they were involved in discussions on personal goals, community, and academic growth.

Jose says, "This project helped give hope to those that feel helpless and hopeless in this world. Through this conference, we impacted the lives of a group of students who gained tools and knowledge that they can use in their everyday lives. It is truly a great feeling and I will continue to give hope and help to others whenever the opportunity arises."

## Ellie Ellis

*Class of 2018, Pitzer College*

Ellie is passionate about improving the ways in which we carry out scientific research and how we communicate findings to those whom they most affect. She says, "As an environmental scientist and concerned citizen of this planet, I believe the social and cultural implications of science should be considered at every step of the research process. My involvement in the Greenhouse Scholars community has helped me instill these principles into all of my academic and extracurricular endeavors. Being part of such a supportive, driven, and socially conscious community has given me the direction I need to make an impact on my communities."

This summer Ellie completed an internship with UNAVCO, where she focused on science video production and creation of educational materials to reach a broad audience of people with different levels of education. This experience took her around Boulder and Denver to educate various groups on geologic principles and the resources provided by UNAVCO's Department of Education and Community Engagement.

Ellie is also in the beginning stages of a senior thesis in which she will reconstruct environmental conditions of the Cambrian period using ancient soils preserved in the fossil record. She plans to continue her geology and environmental science education internationally and complete projects that will generate positive change in the communities she visits. Ellie says, "I am continually encouraged to know that I will have the support of the Greenhouse Scholars community and my amazing mentor, Tisha Schuller, through every step of this process."



Glass Half Full / Georgia



Glass Half Full / Colorado



The Community Table / Illinois



Venus de Miles / Illinois



Annual Inspire / Colorado



Venus de Miles / Colorado



Glass Half Full / Illinois



# 2018 EVENTS

## Glass Half Full / Georgia

Michael and Laura Outlaw will host an intimate gathering where guests will be treated to delicious local barbecue, handcrafted cocktails, and the opportunity to mingle with several inspiring Greenhouse Scholars.

*Reserve tickets for April 21, 2018*  
☛ [glasshalffull-ga.com](http://glasshalffull-ga.com)

## Glass Half Full / Colorado

Denver's premier philanthropic wine and food event will feature cocktails, beer, and wine from local purveyors, cuisine from top restaurants, exciting silent and live auctions, a moving speech from a Greenhouse Scholar, and the opportunity for guests to get to know over a dozen of our inspiring Scholars.

*Join us on May 18, 2018*  
☛ [glasshalffull-co.com](http://glasshalffull-co.com)

## The Community Table / Illinois

Our annual farm to table dinner, hosted at Elawa Farms, will feature a world-class chef to serve delicious, fresh, local dishes that guests will enjoy along with the company of our Scholars.

*Reserve tickets for June 9, 2018*  
☛ [ghscommunitytable.org](http://ghscommunitytable.org)

## Venus de Miles / Illinois

Hundreds of participants, volunteers, vendors, and sponsors will attend Illinois' only women's bike ride and fun run which culminates with a finish festival in the beautiful North Shore community of Lake Forest. Attendees will be pampered with refreshing cocktails, free massages, and plenty of fun.

*July 21, 2018 registration opens in January*  
☛ [venusdemiles.com](http://venusdemiles.com)

## Annual Inspire / Colorado

Greenhouse Scholars' hallmark event brings together all of our Scholars, donors, volunteers, supporters, and new friends to hear a remarkable group of our inspiring young leaders share their incredible stories.

*Reserve complimentary tickets for August 7, 2018*  
☛ [annualinspire.org](http://annualinspire.org)

## Venus de Miles / Colorado

More than 1,200 riders will join us for Colorado's first and largest women's bike ride. After a rewarding ride of 33, 64, or 100 miles in support of Greenhouse Scholars, attendees will enjoy well-deserved massages, great food, and cold drinks.

*August 25, 2018 registration opens in January.*  
☛ [venusdemiles.com](http://venusdemiles.com)

## Glass Half Full / Illinois

As we gather to celebrate our community in Hinsdale, guests will get to know Greenhouse Scholars on a personal level and enjoy delicious food and beverages.

*Join us September 8, 2018*  
☛ [glasshalffull-il.com](http://glasshalffull-il.com)



## GREENHOUSE SCHOLARS

# BOARDS

### Board Of Directors

**Pete Burridge**

President and CEO of Greenhouse Scholars, Greenhouse Partners, and The18.com

**Lane Hornung**

Founder and President of 8z Real Estate and Colorado HomeFinder

**Tucker Humphrey**

Former Vice President of Corporate Banking at First National Bank

**Fred Paulman**

Co-Founder and President of RMB Capital Management

**Andre Pettigrew**

Director of Economic and Workforce Development at City of Durham

**Dick Tharp**

Former Intercollegiate Athletic Director at University of Colorado

### Colorado Development & Advisory Board

**Cynthia Banks**

CEO of New World Vistas

**Greg Bechtel**

Arches Asset Management

**Drew Esson**

Director at DigitalGlobe

**Chris Foreman**

President of Moonbeam Investment Corp.

**Michael Hora**

CEO of Hora Enterprises

**Lane Hornung**

President and Founder of 8z Real Estate

**David Howson**

CEO of Six Degrees Group

**Rich Jorgensen**

President of Sugarloaf Building Company

**Richard Pritzlaff**

President of Biophilia Foundation

**Debbie Sills**

Principal at Deloitte

**Dick Tharp**

Former Intercollegiate Athletic Director at University of Colorado

**Jarrod Tisdell**

Foreign Resources Development Associate at Zayo Group

**Rick Schuham**

Executive Vice President at Savills Studley

### Illinois Development & Advisory Board

**Sarah Demet**

Partner, International Consulting at Mercer

**Julie Hanna Goodman**

Consultant at Lakeside College Advisors

**Gerald Jablonski**

Retired Investment Banker

**Don Kempf**

President and Founder of Giant Screen Films and D3D Cinema

**Steve Monieson**

Investor Relations at Trigran Investments

**Ted Neild**

President and CIO of Gresham Partners

**Fred Paulman**

President of RMB Capital

**Paul Peterson**

SVP, Head of North Region at Fidelity

**Will Poindexter**

Partner at Bain & Company

**Jeff Seifman**

Partner at Kirkland & Ellis

**Brian Weed**

Executive Chairman of Tricoci University

### Georgia Development & Advisory Board

**Dave Kirkpatrick**

VP of Collegiate Licensing Company

### North Carolina Development & Advisory Board

**Elaine Dompka**

Retired Technology Executive

**Nancy Downing**

Education Leader and Philanthropist



# SPONSORS

## TOP CONTRIBUTING CORPORATE PARTNERS



We are beyond grateful to these companies for joining Greenhouse Scholars' mission to be catalysts for lasting change. From lending industry expertise and making significant financial contributions to providing internships and mentors for our Scholars, your generosity is truly inspiring.

## ADDITIONAL CORPORATE PARTNERS



# HONOR ROLL

## PHI BETA KAPPA (\$20,000+)

The Kenneth W. Aldridge Family Foundation  
Alexandria Real Estate Equities Anonymous  
The Anschutz Foundation  
Ken and Susan Beard  
Winston and Brett Berry  
Dick Burrigge Sr.  
Caerus Foundation  
Jim Collins and Joanne Ernst  
Nancy and Bruce Downing  
Foundation for Global Scholars  
Frechette Family Foundation  
Greenhouse Partners  
Gresham Partners  
RMB Capital  
Tellabs Foundation  
Phillip and Hadas Teuscher  
The Zall Family Fund  
Zayo Group

## SUMMA CUM LAUDE (\$10,000+)

8z Real Estate  
AEC Trust  
Andersen Tax  
Greg Bechtel  
Andrew and Donna Brickman  
D'Orazio Capital Partners  
Merritt and Anne Dyke  
Fidelity  
FirstBank  
Hawley Family Foundation  
The HBB Foundation  
Michael Hora  
Tucker and Brian Humphrey  
Mitchell Klein  
Leslie and Doug Monieson  
Steve and Michelle Monieson  
Ted and Lisa Neild

William and Laura Poindexter  
The Sartain Lanier Family Foundation

## MAGNA CUM LAUDE (\$5,000+)

1908 Brands®  
Aerotek  
Ben and Eilah Beavers  
Bicycle Village  
The Caruso Foundation  
Katherine and Guy Crane  
Stockton and Robin Croft  
CTS Group  
Dave Knecht Homes  
Sarah Demet  
Elaine and Regis Dompka  
Drew and Timolyn Esson  
Chris and Laura Foreman  
Julie Hanna and John Goodman  
Peter and Eveline Grady  
Grainger  
Hinsdale Bank and Trust  
Roger and Stephanie Hochschild  
Lane and Carolyn Hornung  
David and Nicci Howson  
Gerald and Marian Jablonski  
The Jorgensen Foundation  
Helen and Andrew Keller  
Brad and Kim Keywell  
Jeffrey Kramer  
Level 3  
Livingston Family Fund  
Allyson and Jim Maske  
The McCleary Group  
Aaron and Maureen Medlock  
Lisa and Jerry Moore  
OCA Ventures  
Michael and Laura Outlaw  
Fred Paulman  
Paul and Rebecca Peterson  
Margot and Marc Pinto  
Richard Pritzlaff  
Marshall Reavis  
Chris and Shari Ribordy  
Savills Studley  
Rick and Marti Schuham

Deborah Sills  
Carrie and Scott Taylor  
Richard Tharp  
Jarrod Tisdell  
Brian and Janet Weed  
Zebra Technologies

## CUM LAUDE (\$1,000+)

Ben and Katie Albrecht  
Bob Alpert  
Wendy Conrad and Neal Aronson  
Athleta  
Susan and Stephen Baird  
Jenny and Kevin Ball  
Gordon and Cynthia Banks  
Brooks and Libby Barge  
Don and Cara Bechter  
Mark Beci  
Jennifer Behringer  
Eric and Lisa Belcher  
Carol Bemick  
Elaine and Stephen Berman  
Tracey and Howard Blitz  
Chris Bohnsak  
Peter Bowen  
Randy and Brooke Brogle  
Barbara and Robert Brownstein  
John and Mary Bucheleres  
The Burr Family Charitable Fund  
Bull Publishing Company  
Peter Burdi  
Pete and Maria Burrigge  
Richard and Andrea Burrigge  
Candice Kiesow and Lester Butt  
The Calhoun Schorer Charitable Fund  
John Casper  
Wendy Cassity  
Richard and Dee Dee Chesley  
Clint and Meg Coghill  
Country Financial  
David and Caroline Crawford  
Kevin Cuttica  
Forrest and Deborah Danson

Michael Deatly  
Rick and Jen Del Giudice  
Detterbeck Johnson and Monsen  
Sheri and Townsend Devereux  
DigitalGlobe  
Ken Dulin  
Steven and Kimberly Earle  
Rick and Karen Eck  
Laura and Scott Eisen  
Farmers Insurance  
Cynthia Ferrer  
Susan and Pat Frangella  
Andrew and Jennifer Friedman  
Friedman and Huey Associates LLP  
Tom Gleason  
Douglas and Elizabeth Granat  
Great Divide Brewing Company  
Richard Grossi  
Pamela Harting  
Virginia Harting  
Barbara Hegarty  
Jim Heneghan and Ann Donovan  
Brendan Heneghan  
High Point Artisan Brands  
Jed Hindes  
Eric and Debbie Hirschfield  
Melissa Ill  
Inovonics  
Howard Isenberg  
Sakeba and Sultan Issa  
Neha and Vivek Iyengar  
Matt and Sara Jenkins  
John and Patricia Mannebach  
Peter Joseph  
K & A Lahona Family Fund  
Susan and David Kalt  
The Kathryn Conway Preyer

Charitable Lead Unitrust  
Nancy and Pete Kelley  
Paul and Julie Kelly  
David Burns and Kiarri Kershaw  
Kent Knudson  
Matt Speck and Sarah Krier  
Andrew Lahona  
David and Marcia Lahona  
Amy and Andrew Larson  
Matt and Kasie Leshner  
Alec and Jennifer Litowitz  
Lucky's Market  
Jimmy Lynch  
Tim and Mary Lyne  
Cynthia and Tom Manos  
Lori and Marshall Maran  
Justin Marinelli  
Mike Martin  
Sandra Mays  
Taylor Mefford  
Jeff Miller  
Jeffrey and Patricia Moran  
Morgan Stanley  
Lori and Mark Muller  
John and Kimberly Nagy  
David Nickel  
Paige Norton  
Win Oberlin  
Lawrence and Debbie Oberman  
Eddie and Sarah Opler  
Organic Valley  
Steven and Theresa Owens  
Andrew and Arianne Parisi  
Malaika and Andre Pettigrew  
John and Elizabeth Poindexter  
Charles and Linda Price  
Christine and Duane Quaini  
Patricia and Chip Ramsey  
Jill and Brent Rasmussen  
Kelly and Toby Regal  
TJ and Nancy Rhine

Julia Richman and Puck Wheaton  
Denise and David Richter  
Todd and Emily Roebken  
Matthew and Katie Rustici  
Mark and Yvonne Savarise  
Jeff and Michelle Seifman  
Emily and Andrew Sewell  
Katherine and Geoff Shaffer  
Kristi and Mike Shehan  
John Shepard  
Linda and Jeff Sluman  
Collie and Jennifer Smith  
Todd and Nancy Smith  
The Steinwachs Family  
Stillwater  
Bill and Ann Stout  
Survey Gizmo  
Jamie Tafoya  
Thomas and Maura Ryan  
Family Foundation  
Sarah and Preston Tims  
Trask Family Foundation  
Trigran Investments  
Ron and Julie Vander Weele  
Caroline Van Sickle  
Peter Verros  
Kevin and Diana Viravec  
Vox Veritas College Consulting  
Erin and Larry Waddington  
Gordon and Amy Walker  
Weskar Corporation  
Neil and Lana Wiese  
Frederick Woodward  
William and Kristy Woolfolk  
Richard and Joan Zajeski  
Pam and Larry Zall

## HONOREES (\$500+)

Margaret Adams  
Paul Adams  
Stephanie Adams  
Jeff and Julie Akers  
Ambitious Grit  
Anonymous  
Luke and Regina Bakalar  
Andrew Bankert  
Greg and Sue Besio

Stacey and Jon Bingaman  
Marilyn Brautigam  
Scott and Ashton Burrigge  
Cathleen Keating Wilburn  
Bob and Judy Charles  
CoBank  
Compel Wear  
The Dailey Method  
Jeff Wright and Paula Daukas  
Jean Davidson  
Kate Demet  
Andrew Dolben  
Donald and Martha Dolben  
Maggie Doyle  
Jim and Valarie Easterling  
David Edstrom  
Doug and Julie Elmore  
Nancie Elshafei  
Farmhouse Culture  
Matthew and Karen Fiascone  
First Unitarian Society of Denver  
Ken Fishbein  
Victor Galati  
Jeanette and Kurt Gawrisch  
Graham and Christy Gerst  
Elizabeth Gisch  
Susan and Brian Griffith  
Bennett and Susan Grimm  
Pam and Mark Gross  
Tom Hackett  
Clay Hammerstein  
Carrie Hogan  
Jennifer Hughes  
Karen Jones  
Kim Kamin and Greg Schementi  
Donald Kane  
James Kane  
Milton Karavites  
Martin Karlov  
Marilyn Kershaw  
Samuel Kessler  
Jessica Kokish  
David Lafferty  
Jennifer Leventhal  
LUNA  
Ariel and Cliff Mactavish  
David and Kristine Mahon

Ted Marusarz  
Marvin and Shivani Mendez  
Richard and Sherri Merel  
Modern Market  
Suzanne Molloy  
Lynn Morgan  
Diane Mrozek  
John and Leslie Munger  
Ellen Nordberg and Paul Williams  
Michael O'Brien  
Andrew Dolben  
Orange Theory Fitness  
Al and Cindy Parker  
Marta Petter  
Judy and Tom Pool  
Amber Pope  
Pure Barre  
Robert and Allison Rabin  
Diana Verrilli and David Raduziner  
Alex Ramanathan  
Kim and Henry Rehberg  
Nan Burroughs and Robert Repetto  
Johann and Alice Robbins  
Darren and Jennifer Royal  
Cyndi Lyden and Paul Rumler  
Jean Scandlyn  
Scott and Hollie Schindler  
Robert Schweich  
Buddy Scott  
Scott and Eileen Seyfarth  
Jim and Nancy Shortall  
Steve Simon  
Sandy Simon  
Robert and Frances Sinton  
Andres Snaider  
Street Factory Media  
Bill Sutherland  
Tebo Properties  
Elizabeth and Michael Thornton

Donations made October 1, 2016 - November 20, 2017.  
Does not include in-kind donations.



# HONOR ROLL

Tonik Cycling  
James and Martha Turner  
Joseph and Margaret VanAndel  
Verve Movement Studio  
Santino Vialpando  
Keith Wagner  
Nathan and Elizabeth Westfeldt  
WheelPower Studio

## FUNDRAISERS (\$500+)

Stephanie Adams-Ball  
Jenny Ball  
Stacey Bingaman  
Melissa Bonnette  
Doris Cheung  
Franny Cheung  
Nancie Elshafei  
Sherry Feinbaum  
Julie Gelderloos  
Lizzy Ginger  
Delia Greth  
Pam Harting  
Barbara Hegarty  
Amy Hunter  
Noelle Kaushik Snow  
Sharon Kenyon  
Stephanie Kueppers  
Donna Kuper  
Ashley Lester  
Jennifer Leventhal  
Kat Mann  
Sharon McClew  
Amy McHose  
Terri Morrell  
Nancy Nesyto-Freske  
Ellen Nordberg  
Jean Scandlyn  
Sandy Simon  
Vickie Smith  
Kathleen Sutherland  
Charlotte Sweeney  
Anna Young

## MENTORS

Matt Agnew  
Benjamin Albrecht  
Alan Aldrich  
David Askew  
Ariel Avila  
Chris Bach  
Brooke Berlin  
Sabrina Black  
Deseanae Bluiett  
Lissa Bricker  
Amy Brokl  
Lilia Cardenas  
Nancy Carlisle  
Dee Dee Chesley  
Ryan Chreist  
Sue Christoph  
Anita Cohen  
Philip Cooke  
Stockton Croft  
An Dang  
Sarah Demet  
Kate Demet  
Peter Doyle  
Treasure Edwards  
Dimitri Eliopoulos  
Leslie Freeman  
Andrew French  
Paula Garcia Todd  
Kate Garofalo  
Jeanette Gawrisch  
Michael Griffin  
Blair Haarlow  
Dwight Ho-Sang  
Saul Huerta  
Melissa Ill  
Mar Jablonski  
Gerald Jablonski  
Mark Jarman  
Robert Kairis  
Kiarri Kershaw  
Kristofer Kitto  
Kendall Krause  
Courtney Krause  
Elaine Lack-Dompka  
Corey LaFontaine  
Laura Lippman  
Bradford Long

Lauren Mack  
Ariel MacTavish  
Carolyn Maezes  
Jim Maske  
Allyson Maske  
Sandi Mays  
Bob McCarthy  
Lisa McDonald  
Maureen Medlock  
Jeff Miller  
Carol Miller  
Leslie Monieson  
Michelle Monieson  
Steve Monieson  
Lisa Moore  
Lori Muller  
Brett Nicholas  
Paige Norton  
Steve Owens  
Kavita Pandit  
Brenda Peele  
Vanessa Perez  
Zeke Perez  
John Poindexter  
Matt Polick  
Butch Price  
Kirby Rabalais  
Lea Ratliff  
Anjali Reddy  
Denise Richter  
Colin Roussil  
Josh Schaidle  
Tisha Schuller  
Emily Sewell  
Anthony Shaffer  
Rachael Shayne  
Peter Sikorski  
Debbie Sills  
Benjamin Sloat  
Linda Sluman  
Sondra Smith  
Sadie Sullivan  
Erica Tarantur  
Collin Tomb  
Kaitlyn Vaske-Wright  
Kevin Viravec  
Cheryl Walker  
Gerri Walsh

Brent Weakley  
Kathryn Weimann  
Eliot Williamson  
Andrew Wingfield  
Kelly Wong

## PROFESSIONAL NETWORK

Carly Abrahamson  
Mary Banks  
Donald Bechter  
Matt Bennett  
Brooke Berlin  
Doug Bonnette  
Candace Brown  
Haley Burrridge  
Pete Burrridge  
Janet Campbell  
Mimi Chau  
Philip Cooke  
David Crawford  
An Dang  
Sheri Devereux  
Paul DiMarchi  
Taryn Fisher  
Andrew French  
John Funk  
Jack Gerber  
Randi Grassgreen  
Sarah Ha  
Meseret Hailu  
Kaylen Haley  
Joan Haug  
Brittini Hernandez  
Jed Hindes  
Lindsay Hogan  
Lane Hornung  
Saul Huerta  
Brian Humphrey  
Gerald Jablonski  
Henry Jones  
Colleen Kapsimalis  
Mary Klingenberg

Cindy Knowlton  
Kendall Krause  
Courtney Krause  
Cristina McGarr  
Michael McManus  
Elizabeth McMillan  
Miranda Meadow  
Maria Mendez  
Susan Miele  
Rich Morris  
Richard Nguyen  
Chau Nguyen  
Michael O'Brien  
Catherine Olkin  
Susan Osbeck  
Zeke Perez  
Butch Price  
Lindsay Reardon  
Anjali Reddy  
Johann Robbins  
David Rolla  
Matt Rustici  
Mark Savarise  
Josh Schaidle  
Lindsay Schaidle  
Emily Sewell  
Mike Shehan  
Sondra Smith  
Kaylan Stinson  
Sadie Sullivan  
Nathan Thompson  
Collin Tomb  
Diana Verrilli  
Erin Waddington  
Cheryl Walker  
Catrina Weigel  
Eric Zacharias

## NEW SCHOLAR SELECTION VOLUNTEERS

Evan Adler  
Gabe Aguilar  
Kalpita Ainapure  
Amy Aldridge  
Joyce Anderson  
Kaleb Anderson  
Sarah Astley  
Ariel Avila  
Crystal Ayala  
Chris Bach  
Fred Bachhuber  
Jennifer Baehre  
Akul Bali  
Jenny Ball  
Lisa Bankoff  
Jessica Banovz  
Brooks Barge  
Sandra Basak  
Vashti Batjargal  
Sara Batt  
Jeanna Beauchamp  
Greg Bechtel  
Kevin Beglen  
Alyssa Bekerman  
Elaine Berman  
Stacey Bingaman  
Chris Bohnsak  
Laura Brenner  
Lissa Bricker  
Randy Brogle  
Lisa Brown  
Mara Buhrmeister  
Jim Bull  
Catherine Burchett  
Zachary Burghardt  
Scott Burrridge  
Haley Burrridge  
Nancy Carlisle  
Caitlin Carmedelle  
John Carroll  
Tracy Cassidy  
Wendy Cassity  
Rama Chakaki  
Jessica Charlesworth  
Mimi Chau  
Priyanka Chaudhary

Kara Churma  
Sandee Cirian  
Jim Clark  
Alexandra Clegg  
Keating Coffey  
Anita Cohen  
Sean Conery  
Stockton Croft  
Melissa Cushing  
Daniel D'Costa  
Jose Dacio  
Jean Davidson  
Rachel Davis  
Bryan Dehmler-Buckley  
Doug DeMartin  
Sarah Demet  
Emily Dempsey  
Elaine Den Hoed  
Sheri Devereux  
April Dickerson  
Kyle Diederichs  
Kathy Dieser  
Katie Ditter  
Amy Donnelly  
Emily Douglas  
Sharon Durrett  
Heather Dykstra  
Agnieszka Dyna  
Sarah Dynia  
Rick Eck  
David Edstrom  
Treasure Edwards  
Jeanette Eldridge  
Doug Elmore  
Curtis Esquibel  
Jen Faifer  
Christine Fanning  
Cynthia Ferrer  
Hana Field  
Ryan Fletcher  
Sarah Fornero  
Alanna Forster  
Axle Fox  
Leslie Freeman  
Jeanette Gawrisch  
Jenny Gerson  
Doug Gieck  
Andrea Giersdorf

Jen Goertz  
Adriana Gomez  
Julie Goodman  
Brandon Gouin  
Leah Granzotto  
Andrew Green  
Lauren Greenfield  
Michael Griffin  
Brenda Gutierrez  
Cristina Gutierrez  
Michael Gutierrez  
Blair Haarlow  
Jordan Hagen  
Julie Haggerty  
Erin Haggerty  
Kelsey Hancock  
Kathleen Hancock  
Bonnie Hardage  
Amy Harms  
Sara Harper  
Amorette Harrison  
Pamela Harting  
Tracy Hartlieb  
Arwa Hasanali  
Keegan Hayes  
Barbara Hegarty  
Janice Heidel  
Liza Hensleigh  
David Hess  
Warren Hite  
Michael Hora  
Brooke Houston  
Jennifer Hughes  
Melissa Ill  
Svetlana Ivanova  
Mar Jablonski  
Gerald Jablonski  
Mark Jarman  
Lucy Jin  
Karen Jones  
Briana Jones  
Richard Jorgensen

# HONOR ROLL

Sharon Josephs  
 Jamie Kach  
 Zhenya Kaliberova  
 Rebecca Kallemeyn  
 Mary Kealey  
 Brandi Keef  
 Don Kempf  
 Kiarri Kershaw  
 Adam Kimberley  
 Jenny Kipp  
 Ashley Kirchner  
 Dave Kirkpatrick  
 Janet Kiyota  
 Susie Klarfeld  
 Natalie Kleehammer  
 Melissa Klein  
 Cindy Knowlton  
 Deborah Knox  
 Kent Knudson  
 Zak Koffler  
 Krista Koth  
 Courtney Krause  
 Garrett LaCouture  
 Corey LaFontaine  
 Brandi Landwehr  
 Monica Lang  
 Kim Lawless  
 Kevin Lawrence  
 Viktoria Lawson  
 Nicole Lengen  
 James Lengyel  
 Ahnika LeRoy  
 Jennifer Leventhal  
 Bashel Lewis  
 Jesse Ling  
 Kathleen Lockhart  
 Sara Love  
 Leslie Lucas  
 Erna Lukac

Edite Maloku  
 Jenna March  
 Rachel Marino  
 Carla Martinek  
 Matthew Martines  
 Paula Matarrese-Sands  
 Thomas McCleary  
 Christy McCollum  
 Lisa McDonald  
 Deborah McFadden  
 James McGuirk  
 Catherine McLaughlin  
 Maureen Medlock  
 Ishita Mehta  
 Marvin Mendez  
 Paige Miller  
 Tiffany Miller  
 Sarah Miskel  
 David Moeller  
 Dan Moeller  
 Kapil Mohan  
 Michelle Monieson  
 Steve Monieson  
 Lisa Moore  
 Sana Moqet  
 Kristen Morphew  
 Terri Morrell  
 Gwendolyn Mossman  
 Lori Muller  
 Katie Murphy-Olsen  
 Thomas NcNeela  
 Nicholene Nelson  
 Sheila Nelson  
 Tiara Nelson  
 Maggie Newland  
 Melissa Newton  
 Ellen Nordberg  
 Paige Norton  
 Michael O'Brien  
 Laura Outlaw  
 Meghan Patrick  
 Ernesha Patrick  
 Allyson Patterson  
 Melissa Pearce  
 Brenda Peele  
 Vanessa Perez  
 Zeke Perez  
 Stefan Peterson

Monica Pflugh  
 Vinh Pham  
 Heidi Phan-Peterson  
 Leia Pitcher  
 Margot Plotz-Rodriguez  
 John Poindexter  
 William Poindexter  
 Daniel Quagliana  
 Jashive Quintas  
 Allison Rabin  
 Meghan Rausch  
 David Ray  
 Anjali Reddy  
 Angela Reese  
 Robert Repetto  
 Michael Rhoades  
 Denise Richter  
 Larry Ricketts  
 Johann Robbins  
 Jean Robertson  
 Raf Rokita  
 Allison Rosen  
 Steve Rosen  
 Hannah Sacco  
 Rebecca Sandbothe  
 Diane Sankey  
 Jean Scandlyn  
 Stacy Scapino  
 Josh Schaidle  
 Lindsay Schaidle  
 Rick Schuham  
 Hilary Schwartz  
 Rick Scott  
 Casey Scott  
 Amber Scott  
 Debbi Serke  
 Emily Sewell  
 Nihar Shah  
 Stacy Shearer  
 Andreas Shepard  
 Reshma Shrestha  
 Serin Silva  
 Adam Silver  
 Sandy Simon  
 Lizzy Smith  
 Jessie Smith  
 Todd Smith  
 Chas Smithgall

Kristin Snow  
 Krishna Somayajula  
 Melissa Sorrentino  
 Tara Stifler  
 Molly Strickland  
 Nikki Stults  
 Huseen Sufi  
 MJ Suh  
 Jaime Sulzer  
 Jennifer Tamariz Bautista  
 Nicholas Tarleton  
 Elise Thiemann  
 Bobbie Jo Tiede  
 Jarrod Tisdell  
 Bess Tschantz-Hahn  
 Leah Urdahl  
 Rebekah Van Sweden  
 Olivia Verma  
 Melanie Vert  
 Nancy Vick  
 Kevin Viravec  
 Erin Waddington  
 Mike Ruth  
 Elizabeth Walgram  
 Hannah Wanderer  
 Deonna Wardlow  
 Erin Watson  
 Erika Wayo  
 Jeremy Wickenheiser  
 Asia-Ana Williams  
 Andrew Wingfield  
 Erik Wolf  
 Kelly Wong  
 Frederick Woodward  
 Michelle Xie  
 Maya Yakobi  
 Michael Yasiejko  
 Tami Zylka

# GET INVOLVED

## Volunteer

### Help Select the New Class of Scholars

Read and score applications for our incoming freshman class. This is a great way to learn about our program and the exceptional students we support.

➔ [greenhousescholars.org/get-involved](https://greenhousescholars.org/get-involved)

### Join Our Professional Network

Meet with Scholars throughout the year to discuss their career path, opportunities in your field, and help them make valuable networking connections.

➔ [greenhousescholars.org/get-involved](https://greenhousescholars.org/get-involved)

### Become a Mentor

Create a one-on-one relationship with one of our Scholars and help guide them as they navigate college and make important decisions about their careers.

➔ [bit.ly/ghsmentor](https://bit.ly/ghsmentor)

## Donate

### Sponsor A Scholar

Families or groups can also sponsor a Scholar with a recurring annual gift.

➔ [Email: apool@greenhousescholars.org](mailto:apool@greenhousescholars.org)

### Donate to Our Endowment Fund

➔ [Email: apool@greenhousescholars.org](mailto:apool@greenhousescholars.org)

Contribute: ➔ [greenhousescholars.org/donate](https://greenhousescholars.org/donate)

\$10,000	— supports one Scholar for one full year in our program.
\$5,000	— funds a one-year tuition grant.
\$2,000	— provides grants for life-changing opportunities like community impact projects, lab research, study abroad, and internships.
\$100 - \$1,000	— general program donation provides support across all program components.





## GREENHOUSE SCHOLARS

To get involved or to make a financial contribution, please contact:

**Andra Pool**  
**303.460.1754**  
**[apool@greenhousescholars.org](mailto:apool@greenhousescholars.org)**

[www.greenhousescholars.org](http://www.greenhousescholars.org) | 

*100% of design costs for this newsletter was donated by Greenhouse Partners.*

*Greenhouse Scholars' finances are audited every year by an independent accounting firm. 82% of our annual expenses goes to our Program.*